

How to
get more
done in
less time.



Savin 8035/8045



savin®

Savin 8035/8045 Series. Make the mo

The Savin 8035/8045 Digital Imaging Systems give you the performance you need to compete in a new era of global competition. Their 35/45-ppm output speed can handle virtually all of your document needs. The large touch-screen display makes the impressive time and labor-saving features easy to access. And the standard 80-sheet Auto Reversing Document Feeder can handle one- and two-sided documents in a broad range of sizes and types. In fact, the Savin 8035/8045 Series gives you the power to do just about anything you could want with your documents: from high-speed copying and network printing to scanning and advanced faxing. And they include the security features you need to protect both the integrity of your documents and your network.



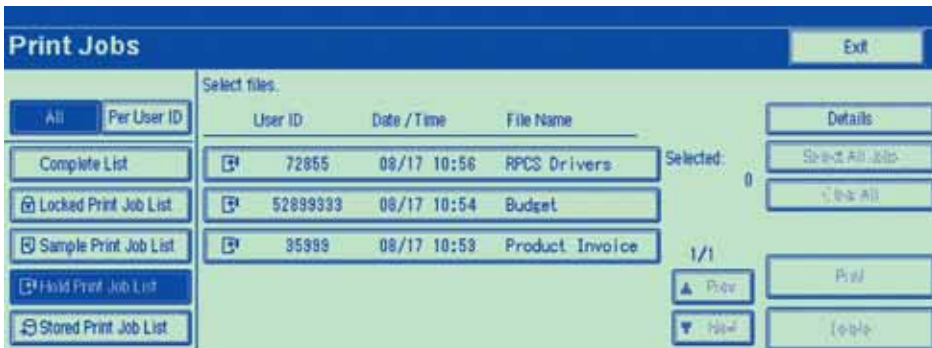
Savin 8035 with optional 1,000-sheet Finisher and PS530 Paper Bank.

Connect To Your Network – Easily And Securely

The Savin 8035/8045 Series takes all the guesswork out of installing and setting up your newest productivity enhancement device. And they offer several new features for easing your mind about sending prints to a central location. For example, printing out documents in far-away output trays can expose sensitive information to unauthorized personnel. This problem is solved with

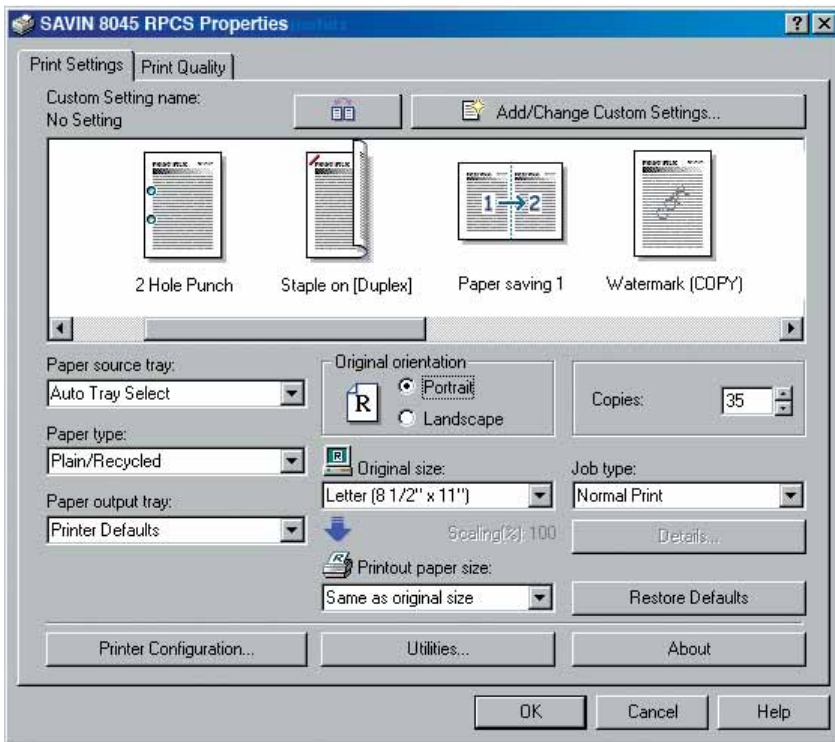
the Hold/Locked/Stored Print feature, which lets you store jobs electronically at the printer in a “virtual mailbox” until you release them at walk-up.

- **10/100 BaseT Ethernet and USB 2.0** interfaces ensure easy integration with your network.
- **PCL5e/6 and Adobe Postscript® 3** provide compatibility to PC and Mac™ platforms.
- **PDF Direct Print** lets you send PDF files directly to the printer without even opening the application, reducing network traffic and raising productivity. Ideal for printing scanned PDFs.
- **40 GB hard drive and 384 MB RAM** rapidly handle even your largest documents and spool print runs quickly.



The Hold/Locked/Stored Print functions let you hold your printed documents securely in the device until you're ready to retrieve them. You can also print and delete multiple documents in a single operation.

ve to a more productive and cost-effective



Even the most complex jobs can be simplified to a one-click operation with Savin's proprietary RPCS (Refined Print Command Stream) driver. This icon-based driver provides comprehensive job control that allows even novice users to create professional documents easily.

Tap The Power Of Network Scanning

The network scanning capabilities of the Savin 8035/8045 Series can connect you and your document stream to virtually any email address in the world.

- Deliver scanned documents directly to email addresses or automatically file them into folders, eliminating the need to detach and save documents manually.

- Scan to a wide selection of industry standard formats, including **TIFF**, **TIFF-F**, **PDF** and **JPEG**.
- Access up to five corporate **LDAP servers** and make efficient use of your existing information such as login data, passwords and company address books.

Scan-to-URL



Scan-to-URL improves information sharing in your organization while minimizing network traffic.

Faxing: Redesigned To Cut Document Distribution Costs

The 33.6Kbps Modem with standard JBIG Compression can handle up to three G3 lines at once to accommodate even heavy fax users. Or eliminate the entire paper-to-paper transaction of traditional faxing and distribute documents nearly anywhere in the world at virtually no cost.

- Capitalize on the cost-saving benefits of **IP Faxing (T.38)**: bypass your PSTN and send and receive faxes over your LAN or WAN for fast, high-quality communication.
- Cut steps and save time by faxing directly from your PC with **LAN Fax**.
- Eliminate long-distance and international phone costs: with the Savin 8035/8045 Series you can distribute documents in either hardcopy or TIFF-F email attachments anywhere in the world through the **T.37-compliant Internet Fax** function.
- Automatically route documents to email addresses, hard drives or folders with **Fax Forwarding**, ensuring that critical documents reach their destinations.



ive workflow.

Select the configuration based on the requirements for your office



For productive printing and document handling



For total document needs in a space-saving design



For efficient document management outside the corporate firewall, via the Internet

Manage It All Without Leaving Your Desk

The Savin 8035/8045 Series makes it easy to monitor your peripherals from your PC. Through the Web Image Monitor feature, they harness the convenience of your Web browser to let you check system status, program settings and make changes to your address books right from your desktop. For even greater convenience, you can program the system to automatically send an email alert if it is low on toner or otherwise needs attention.

Seamless Storage And Retrieval Of Your Documents

Leverage the power of the Savin 8035/8045 Series' Document Server as an on-site virtual document library for archival and print-on-demand applications. Retrieved documents can be re-printed, re-faxed, re-scanned or downloaded to your computer for editing.

documentmall

DocumentMall: Manage/Share/Protect Your Documents

DocumentMall allows users to securely store, edit, share and retrieve documents and files from their PCs via the Internet, and securely scan hardcopy documents directly from Savin 8035/8045 MFPs. This powerful document management application is accessible 24/7 and provides businesses with a managed and hosted off-site environment that allows knowledge workers in remote locations to collaborate real-time on projects in a secure environment. Advanced search and indexing software and unlimited scalability permits businesses of any size to use DocumentMall as a versatile resource.

Embedded Software Architecture

Customize Your System, Enhance Your Workflow

The Savin 8035/8045 Series exceeds industry standards with Embedded Software Architecture – an innovative Java (J2ME)-compatible software development platform. Embedded Software Architecture allows for the development of key applications that run on the Savin 8035/8045 Series, dramatically enhancing your organization's workflow. The Savin 8035/8045 Series can easily be customized to meet your needs by controlling features such as the operation panel, printing, saving files and scanning.

Choose from a variety of professional finishing options



1,000-Sheet Finisher



Booklet/Saddle Stitch Finisher



Multi-Tray Finisher

Savin 8035/8045

Control Panel

Large touch-screen Control Panel makes navigation easy.

Finisher

Multi-Tray Finisher staples in several positions and punches holes (optional) to produce a variety of document types (option).

Paper Trays

Two user-adjustable, 500-sheet Drawers support paper sizes up to 11" x 17".

Paper Drawers

500 x 2, user-adjustable Paper Bank expands capacity to hold up to five different sizes or orientations of paper (option).

Document Feeder

Standard 80-sheet Automatic Reversing Document Feeder enables fast, efficient scanning for one- or two-sided documents up to 11" x 17".

Output Tray

Additional 125-sheet Output Tray separates copy output from prints or faxes and lights up when output is present (option).

Duplex Unit

Duplex Unit allows unlimited printing of two-sided documents, reducing filing space and costs.

Bypass Tray

50-sheet Bypass Tray allows for printing on labels or special papers.

Large Capacity Tray

Large Capacity Tray holds up to 1,500 8.5" x 11" sheets, minimizing interruptions on long jobs (option).

Security Management: Protecting Your Network And Your Documents



The Savin 8035/8045 Series can be a key part of your security solution. The long list of sophisticated security features will help safeguard your documents and data at every point in the document distribution process.

- **Windows/LDAP Authentication** guards access to your network PC by requiring users to input their existing names and passwords.

- **Restrict unauthorized access** by limiting user rights to the device by applications.
- **Encryption** protects data from interception, falsification and tampering during transmission.
- **DataOverwriteSecurity System (DOSS)** automatically overwrites the "latent image" left in the internal hard drive after a job is completed, making any effort to access and reconstruct residual image data virtually impossible.

- **Removable Hard Disk Drive** allows you to protect classified or confidential information by simply removing the hard drive to a safe, secure location.

Choose Savin

Savin offers a comprehensive range of printing and document solutions and has formed partnerships with numerous solution providers. After evaluating your specific applications and needs, we will provide the right solution to boost your productivity, reduce your costs and improve your competitive edge.

For more information, contact your authorized Savin dealer.

Your Environmental Partner

The Savin 8035/8045 are Energy Star® compliant, continuing our longstanding commitment to developing office solutions with superior energy and supply-saving features, including:

- Quick Start-Up (QSU) technology
- Power-saving Sleep modes
- Duplex and Combine Copy modes
- Toner Recycling
- Low noise levels
- Minimal ozone emissions



www.savin.com

Savin 8035/8045 Specifications

ENGINE/COPIER SPECIFICATIONS

Configuration	Console
Scanning Element	Flatbed with Moving CCD Array Image Sensor
Printing Process	Twin Laser Beam Scanning & Electrophotographic printing
Toner	Dry, Dual Component
System Memory (std./max.)	128/384 MB RAM
Hard Disk Drive	40 GB standard
Document Feeder	Standard 80-Sheet ARDF
Copy Resolution	600 x 600 dpi
Grayscale	256 levels
Exposure Adjustment	Manual & Automatic
Quantity Indicator	Up to 999
Original Type	Book/Sheet
Maximum Original Size	Up to 11" x 17"
Copy Size	5.5" x 8.5" to 11" x 17"
Copy Type	Plain Paper, Transparencies
Warm-Up Time	8035: 15 seconds 8045: 20 seconds
First Copy Speed	8035: 4.3 seconds 8045: 3.6 seconds
Continuous Copying Speed	8035: 35 copies/minute (LTR) 8045: 45 copies/minute (LTR)
Recovery Time (from Auto Off)	8035: 10 seconds 8045: 15 seconds
Power Source	120V/60Hz/15A
Dimensions	26.5" (W) x 26" (D) x 34" (H)
Weight	214 lbs.
Standard Paper Capacity	500 sheets x 2 trays
Optional Paper Capacity	50-sheet Bypass tray 500 sheets x 2 trays
Paper Size	1,500-sheet Large Capacity Tray 5.5" x 8.5" to 11" x 17"
Paper Weight	20 – 28 lb. Bond/64 – 105g/m ² (Trays 1 & 2) 16 – 44 lb. Bond/52 – 163g/m ² (Bypass) 20 – 28 lb. Bond/64 – 105g/m ² (Duplex)
Reduction Ratios	25%, 50%, 65%, 73%, 78%, 85%, 93%
Enlargement Ratios	121%, 129%, 155%, 200%, 400%
Zoom	25% to 400% in 1% increments
Standard Features	Auto Magnification, Auto Paper Select, Auto Tray Switch, Background Numbering, Booklet/ Magazine Copy, Center/Border Erase, Combine Mode, Cover Insertion, Date Stamp, Directional Magnification, Document Server (3,000 file capacity), Electronic/ Rotate Sorting, 10 Job Programs, Negative/Positive, OHP Slip Sheet, Page Number Stamp, Paper Designate, Series Copy, Pre-Set and User Stamps, Touch Screen Control Panel, 100 User Codes (optional 500 max.)

SCANNER SPECIFICATIONS (Option)

Scanning Speed	Embedded Scanning: 52 ipm (@ 200 dpi)
Scanning Resolution	600 dpi
Grayscale	256 Levels
Scan Area	Up to 11" x 17"
Standard Interfaces	10BaseT/100BaseTX
Optional Interfaces	IP Over IEEE 1394, IEEE 802.11b Wireless LAN
Protocol	TCP/IP, SMTP, SMB, FTP, IPX, POP3, NCP
Memory Capacity	384 MB Shared
Standard Features	Embedded Scan-to-Email/HDD/ Folder/URL
File Formats	Single Page TIFF/JPEG/PDF, Multi-Page TIFF/PDF

PRINTER SPECIFICATIONS (Option)

Print Speed	8035: 35 ppm 8045: 45 ppm
CPU	RM7035C 466 MHz
Memory Capacity	384 MB shared
Standard Interfaces	10BaseT/100BaseTX, USB 2.0
Optional Interfaces	IEEE 802.11b Wireless LAN, Bluetooth, IEEE 1394, IEEE 1284
Network Protocol	TCP/IP, IPX/SPX, AppleTalk
Network Operating Systems	Windows 9x/NT4.0/2000/ME/XP/ Server 2003, Netware, UNIX; Sun Solaris, HP-UX, SCO OpenServer, Red Hat Linux, IBM AIX, Mac 8.6 - 9.2x, 10.1+, SAP R/3, NDPS Gateway, IBM iSeries/AS/400® using OS/400 Host Print Transform
Utilities	SmartDeviceMonitor, Web Image Monitor, Web SmartDeviceMonitor, DeskTopBinder V2 Lite
Page Description Languages	PCL 5e/6 emulation Savin RPCS
Print Resolution	Adobe PostScript 3 (optional) Up to 600 dpi (2400 x 600 dpi with smoothing)
Fonts for PCL 5e/6	35 Intellifonts, 10 TrueType Fonts, 1 Bitmap, 13 International Fonts
Fonts for PS3	136 PostScript Fonts
Standard Features	Form Overlay, Watermarks, Spool Printing, Sample/Locked/Hold/ Stored Print, Encryption

FAX SPECIFICATIONS (Option)

Circuit	PSTN, PBX
Compatibility	ITU-T G3
Resolution	200 x 200/100 dpi 400 x 400 dpi (Optional)
Compression Method	MH, MR, MMR, JBIG
Scanning Speed	0.43 seconds (LEF)
Modem Speed	33.6 Kbps with Auto Fallback
Transmission Speed	G3: 3 seconds per page (MMR Compression) G3: 2 seconds per page (JBIG Compression)
Memory	4 MB standard (320 pages) 28 MB maximum (2,240 pages)
Memory Backup	1 hour
Auto Dials	2,000
Group Dials	100 (max. 500 numbers per group)
ID Code Programming	4 digits
User Function Key	3 keys
Standard Features	Auto Document (6), Book Trans- mission, Dual Access, Duplex Reception, Image Rotation
Optional Features	Simultaneous Operation of up to 3 Lines (G3 x 3); LAN-Fax Capability, Internet Faxing (T.37), IP Faxing (T.38), Fax Forwarding to Email/HDD/ Folder with Scan/Print Installed

PS530 PAPER BANK (Option)

Paper Size	5.5" x 8.5" to 11" x 17"/A5 to A3
Paper Weight	20 to 28 lb. Bond/60 to 105g/m ²
Paper Capacity	2 x 500 sheets
Dimensions	21.3" (W) x 23.7" (D) x 10.7" (H)

RT45 LARGE CAPACITY TRAY (Option)

Paper Size	8.5" x 11"/A4
Paper Weight	20 to 28 lb. Bond/60 to 105g/m ²
Paper Capacity	1,500 sheets
Dimensions	15.4" (W) x 19.7" (D) x 15.4" (H)

ONE BIN TRAY PT330 (Option)

Paper Size	5.5" x 8.5" to 11" x 17"/A5 to A3
Paper Weight	16 to 28 lb. Bond/60 to 105g/m ²
Paper Capacity	125 sheets

SR790 FINISHER 1000 (Option)

Paper Size	5.5" x 8.5" to 11" x 17"/A6 to A3
Paper Weight	16 to 42 lb. Bond/60 to 157g/m ²
Stack Capacity	Proof Tray: 250 sheets (8.5" x 11" or smaller) Shift Tray: 1,000 sheets (8.5" x 11" or smaller) 500 sheets (8.5" x 14" or larger)
Staple Capacity	50 sheets (8.5" x 11" or smaller) 30 sheets (8.5" x 14" or larger)
Staple Position	3 positions (1 staple/2 positions; 2 staples/1 position)
Dimensions	20.7" (W) x 20.5" (D) x 31.1" (H)

SR880 MULTI-TRAY FINISHER (Option)

Paper Size	5.5" x 8.5" to 11" x 17"/A6 to A3
Paper Weight	14 to 43 lb. Bond/52 to 163g/m ²
Stack Capacity	Upper Tray: 500 sheets (8.5" x 11" or smaller) Lower Tray: 2,000 sheets (8.5" x 11" or smaller); 750 sheets (8.5" x 14" or larger)
Staple Capacity	50 sheets (8.5" x 11" or smaller) 30 sheets (8.5" x 14" or larger)
Staple Position	4 positions (1 staple/3 positions; 2 staples/1 position)
Dimensions	26.8" (W) x 24.4" (D) x 40.6" (H)

SR890 BOOKLET FINISHER (Option)

Paper Size	5.5" x 8.5" to 11" x 17"/A5 to A3
Paper Weight	14 to 43 lb. Bond/52 to 163g/m ²
Stack Capacity	Upper Tray: 150 sheets (8.5" x 11" or smaller); 75 sheets (8.5" x 14" or larger) Lower Tray: 1,000 sheets (8.5" x 11" or smaller); 500 sheets (8.5" x 14" or larger)
Staple Capacity	50 sheets (8.5" x 11" or smaller) 30 sheets (8.5" x 14" or larger)
Booklet Tray Capacity	10 sets (11 to 15 sheets) 15 sets (6 to 10 sheets) 25 sets (less than 5 sheets) 15 sheets
Booklet Staple Capacity	4 positions (1 staple/2 positions; 2 staples/2 positions; plus saddle stitch)
Booklet Staple Position	27.1" (W) x 24.5" (D) x 41.5" (H)
Dimensions	

2/3 HOLE PUNCH KIT (Option)

Paper Weight	14 to 43 lb. Bond/52 to 163g/m ²
Application	For SR880 Multi-Tray Finisher only

ADDITIONAL OPTIONS

Bridge Unit Type 2045
Scanner Accessibility Option Type 3045
Fax Type 3045
Handset Type 450
G3 Interface Type 3045
Printer/Scanner Unit Type 3045
PostScript Type 3045
Key Counter Bracket Type H
DOSS Type D
File Format Converter Type B
Copy Data Security Unit Type A
FAC25 Cabinet
32 MB Fax Memory
User Account Enhancement Kit Type E
IEEE 1394 Interface Board Type B
IEEE 1284 Interface Board Type A
Bluetooth Interface Unit Type 3245
IEEE 802.11b Interface Unit Type H
Removable Hard Drive
Additional Removable Hard Drive

savin®

Savin Five Dedrick Place, West Caldwell, NJ 07006

SAVIN® is a registered trademark of Ricoh Corporation. Windows® and Windows® 95/98/Me/NT4.0/2000/XP are registered trademarks of Microsoft Corporation. Macintosh®, Mac® OS and AppleTalk® are registered trademarks of Apple Computer, Inc. Adobe® and PostScript® are registered trademarks of Adobe Systems, Inc. PCL® is a registered trademark of Hewlett-Packard Company. RPCS™ is a trademark of Ricoh Company, Ltd. All other trademarks are the property of their respective owners. Print speed may be affected by network, application or PC performance. Specifications and external appearances are subject to change without notice. Products are shown with optional features.

♻️ Printed in U.S.A. on recycled paper. (S2142)

